

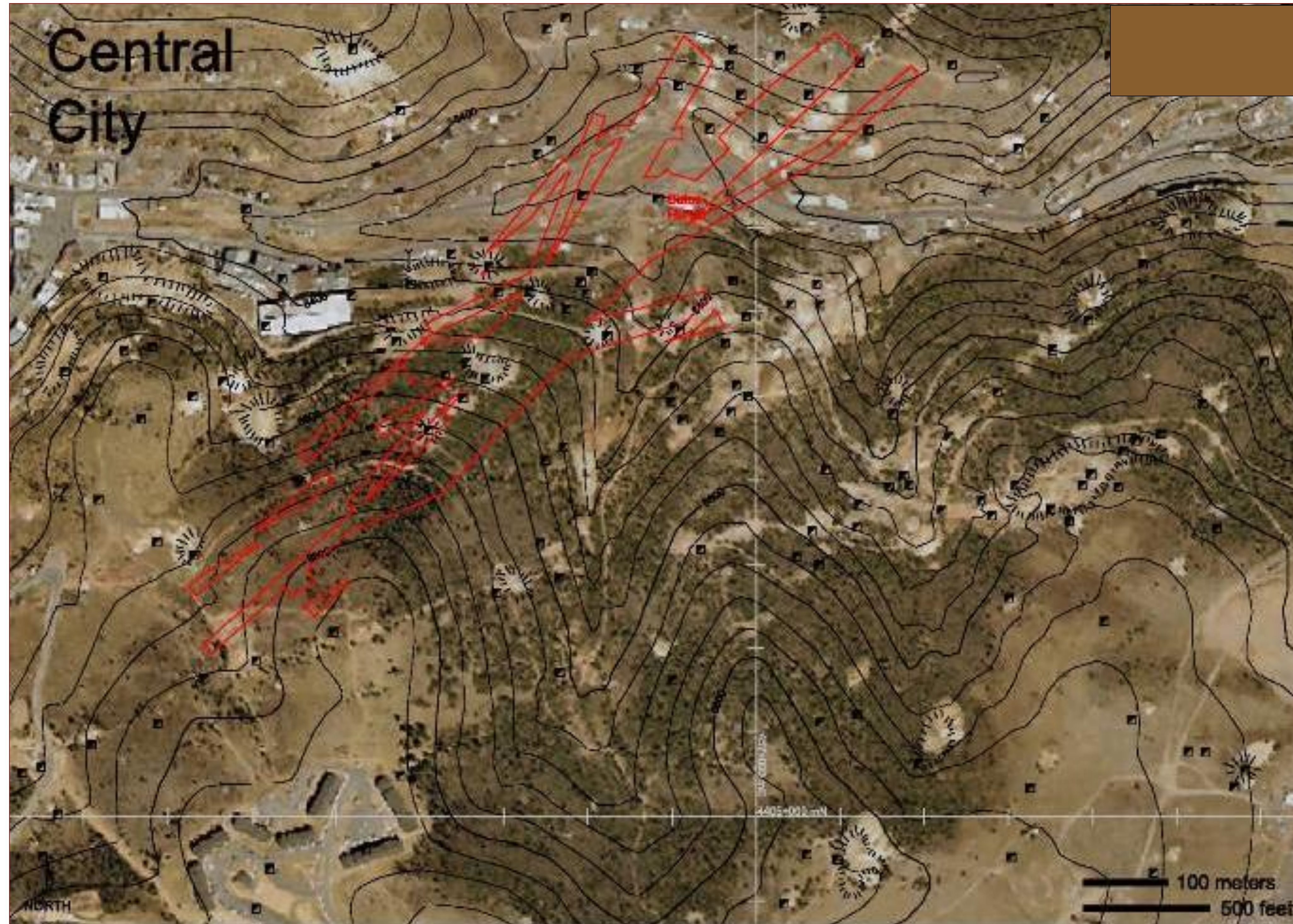
The Bates-Hunter Gold Mine

Central City, Colorado



The Bates-Hunter Gold Mine

Aerial photograph of the Mine

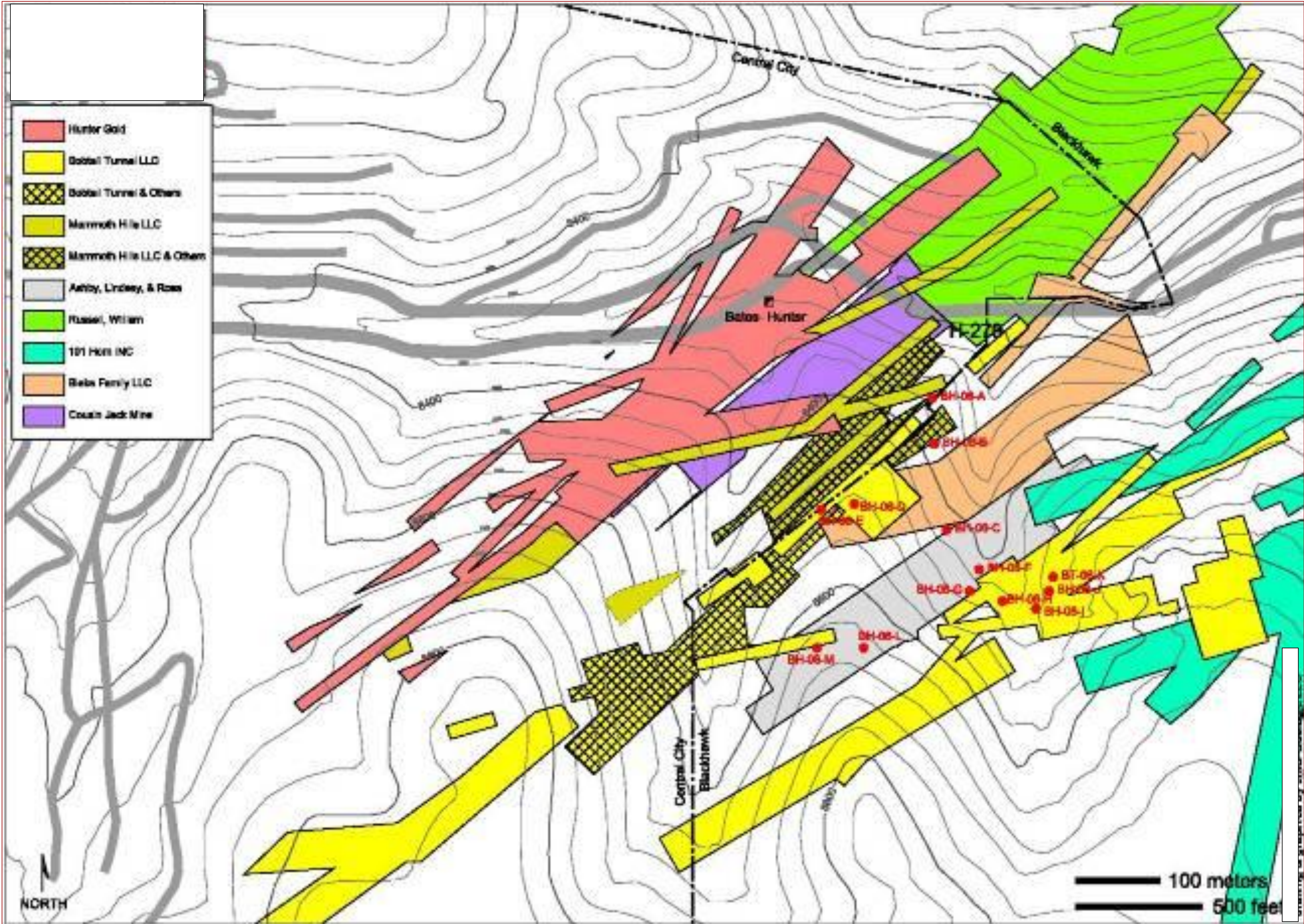


Air photo of the Bates-Hunter Mine area. Contour interval 40 feet.
Mineral rights (approximately located) outlined in red.



The Bates-Hunter Gold Mine

Claim Map



Land Status Map showing proposed drill targets and approximate claim boundaries.
(July 2006)



The Bates-Hunter Gold Mine

Highlights

- Site of the initial Colorado Gold Rush from the mid-1800s with historic production of 4+ million ounces from the area - 25% from the immediately surrounding properties including the Bates-Hunter
- A number of years were taken to consolidate the land holdings by the current owners
- **Fully permitted:** Water Discharge, Mining and Mill
- Modern state-of-the-art water treatment facility with excess capacity available to the municipality and/or state
- Shaft, Hoist Room, Mine Dry, Work Shop in place and serviceable
- Workings down to the 800' level with confirmation of veins to depth; contiguous properties have been mined to 2100-2200 feet
- Very high historic grades in the order of **0.50 oz/t**
- Potential for **1 million+** ounce resource with additional upside potential
- Dewatering of shaft tested to a depth of 500'



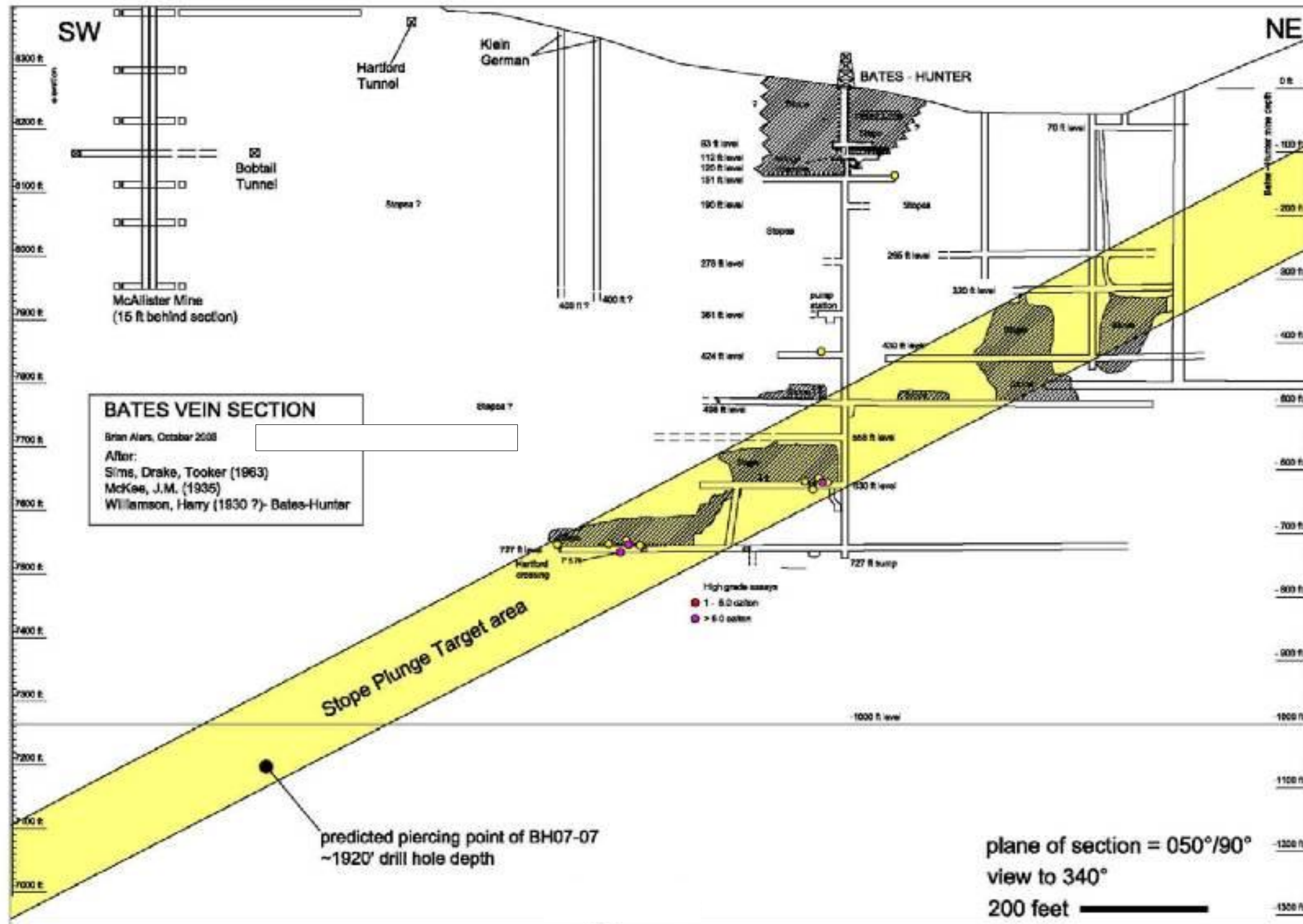
The Bates-Hunter Gold Mine

Water Treatment Plant



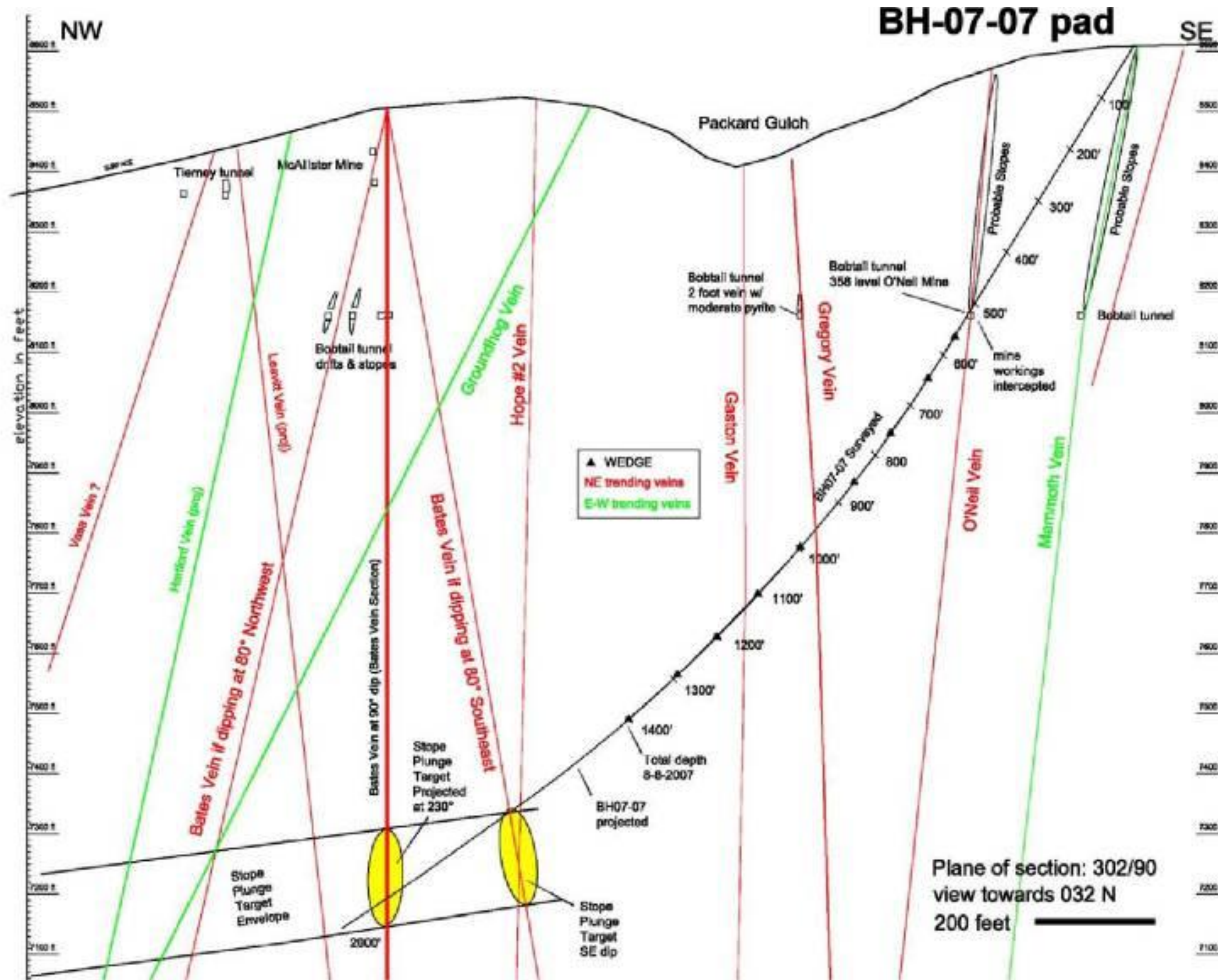
The Bates-Hunter Gold Mine

Lower Level Assay Map



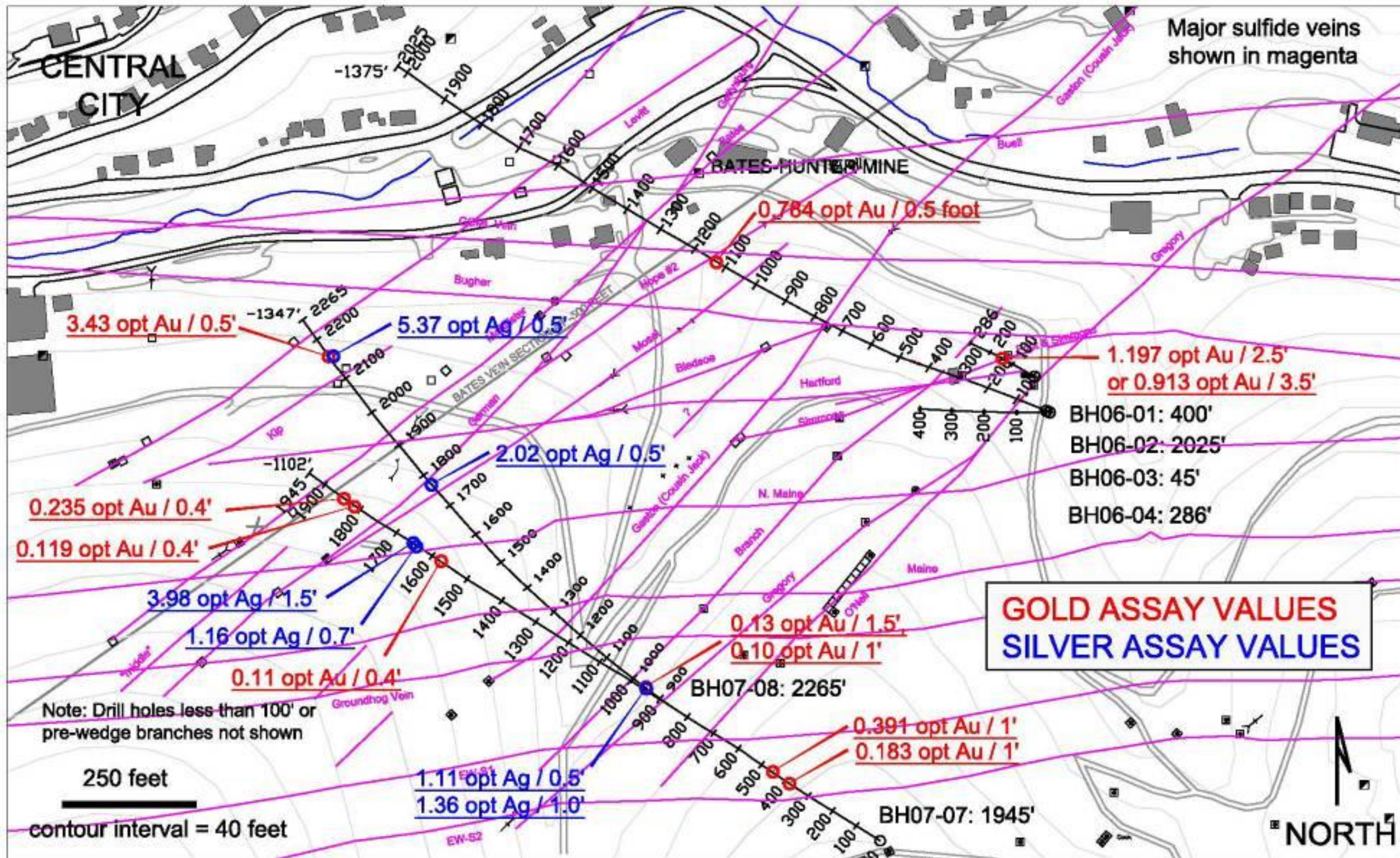
The Bates-Hunter Gold Mine

Diamond Drill Hole BH07-07 (8/8/07)



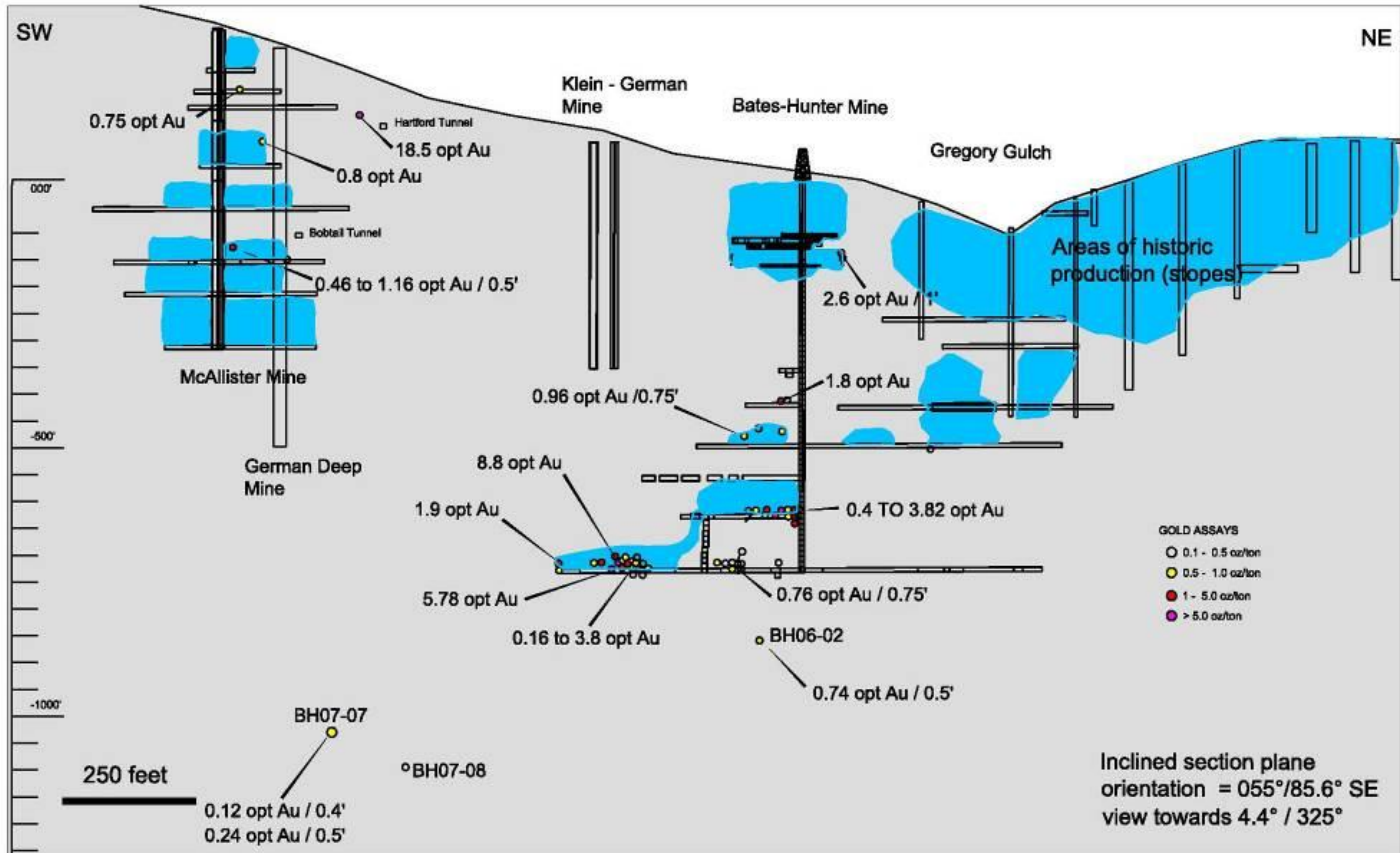
The Bates-Hunter Gold Mine

Results of Surface Drill Program



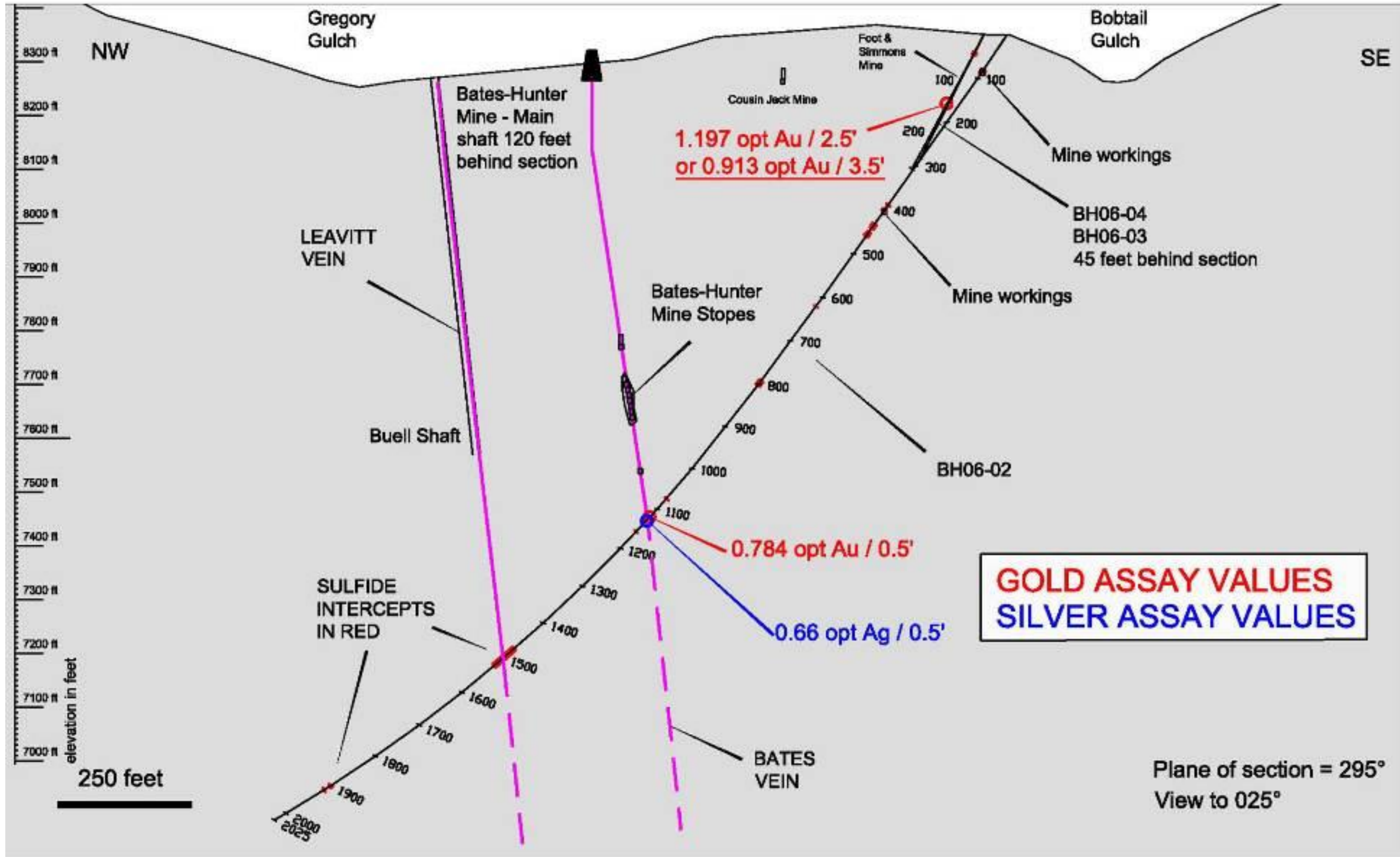
The Bates-Hunter Gold Mine

Bates Vein Section



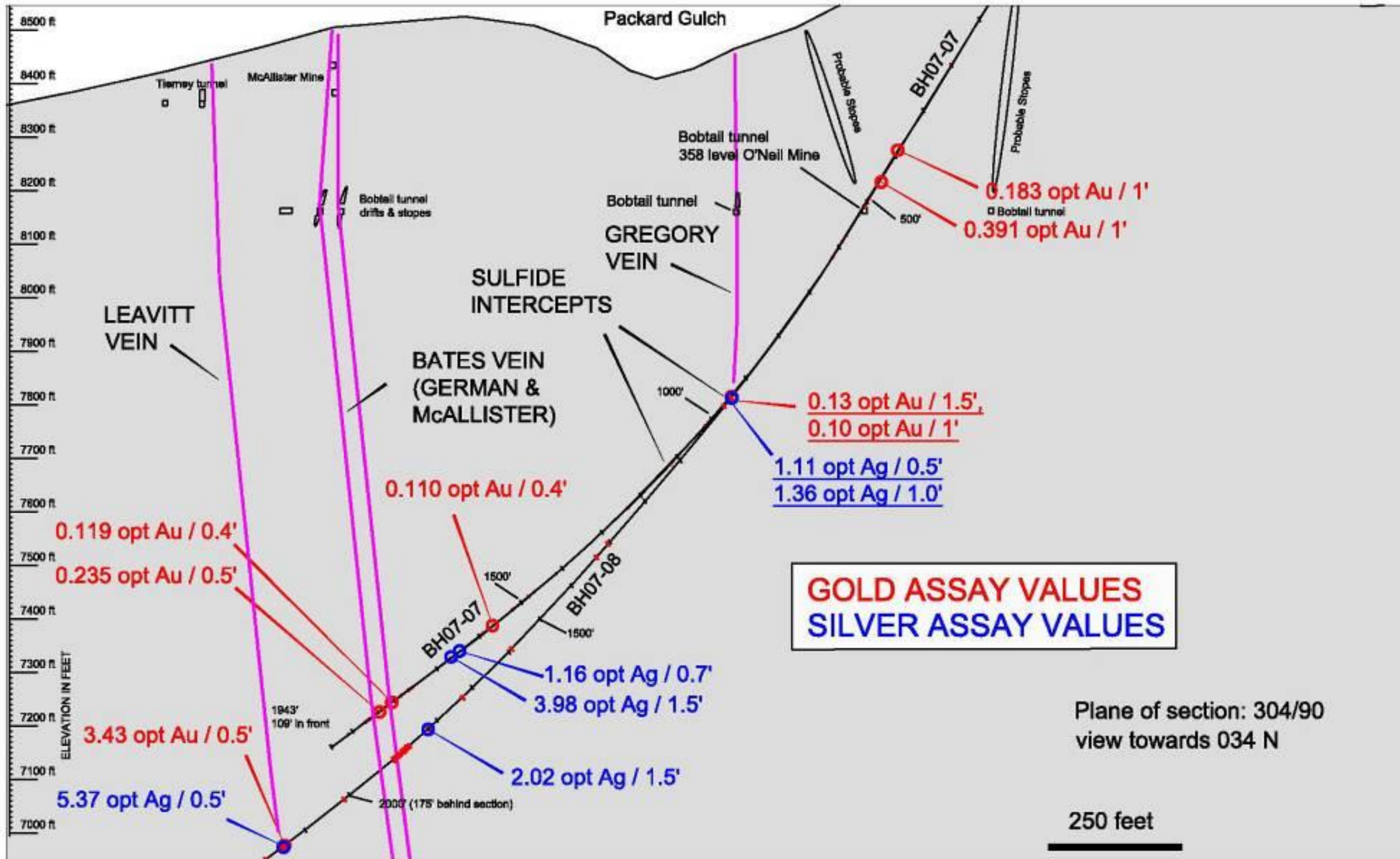
The Bates-Hunter Gold Mine

Cross Section: DDH BH06-02, 03, & 04



The Bates-Hunter Gold Mine

Cross Section: DDH BH07-07, 08



The Bates-Hunter Gold Mine

The Mine and Water Treatment Facility



The Bates-Hunter Gold Mine

Core Sample

